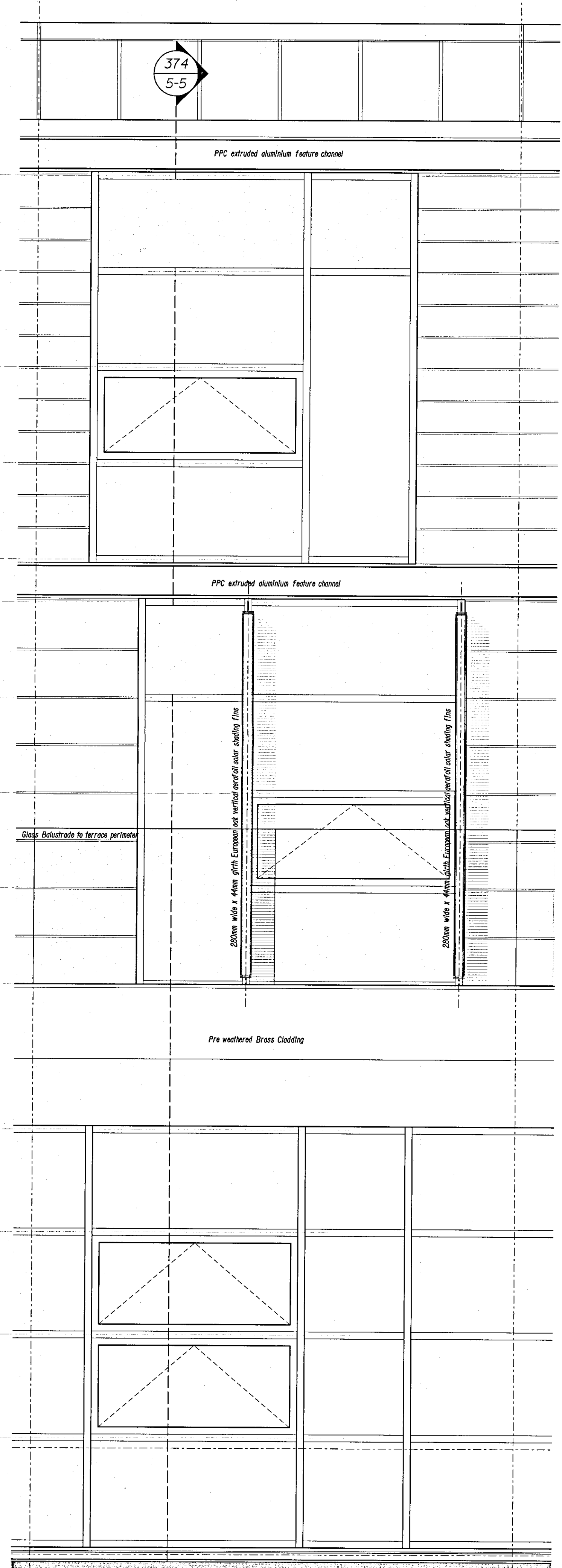
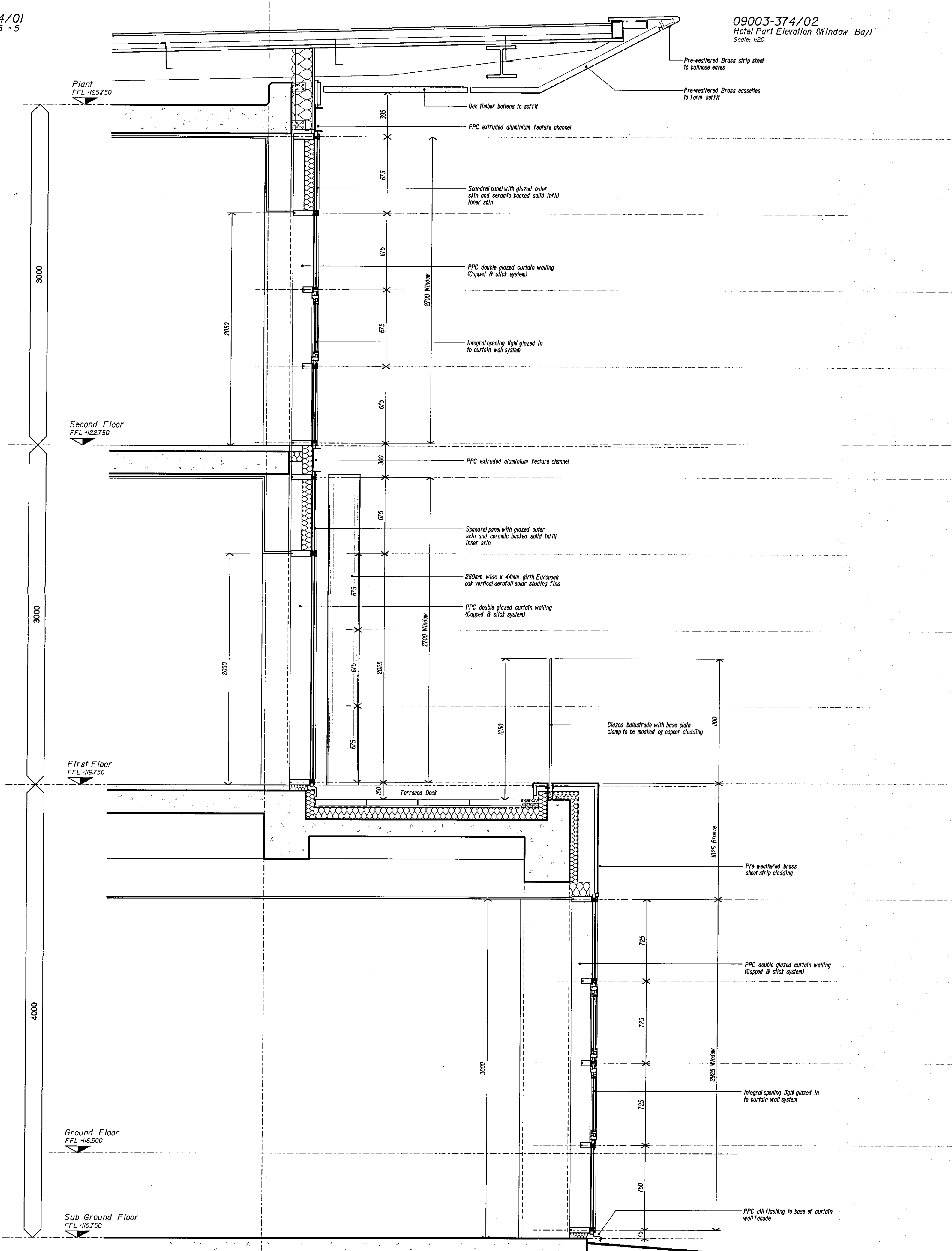


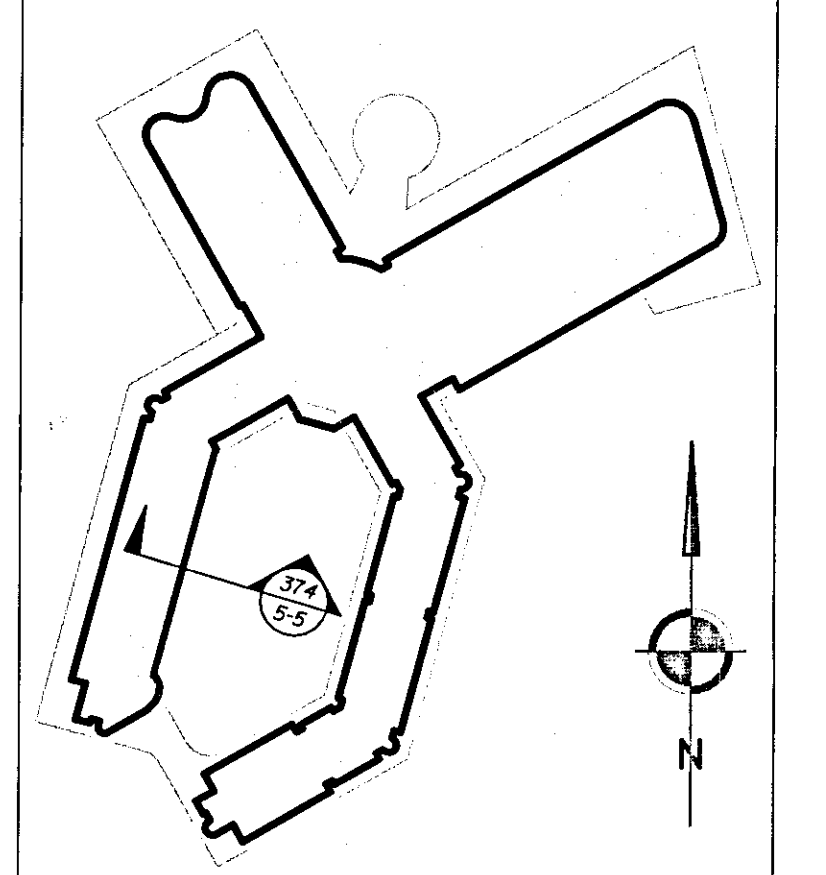
09003-374/01
Hotel Section 5 - 5
Scale: 1:20

09003-374/02
Hotel Part Elevation (Window Bay)
Scale: 1:20



Notes
1. To be read with CDM Risk Register
2. Do not scale, check this is the latest version, if in doubt, ask see drawing issue log for issue history

09003-374/03
Hotel Section Location Plan
Scale: NTS



RECEIVED
24 FEB 2010
TIME:
P/10/00255

| | | | | |
|-----|--------------------------|------------|----|--------|
| A | ISSUED FOR PLANNING | 2010.02.12 | MC | SG |
| - | Draft Issue For Comments | 2010.01.29 | MC | SG |
| Rev | Notes | Date | By | Review |

redboxarchitecture

Red Box Architecture, St Nicholas Chambers, Newcastle upon Tyne, NE1 1RU
t: +44 (0)191 245 7105, f: +44 (0)191 245 7111, mail@redboxdesign.com, www.redboxdesign.com
Red Box Design Group Ltd trading as Red Box Architecture
redboxdesigngroup : redboxinteriors : redboxgallery

THE NATIONAL FOOTBALL CENTRE
ST GEORGE'S PARK

PROPOSED HOTEL
Section 5-5

| | | | |
|---------|----------|-----|---|
| See Dwg | 09 003 | 374 | A |
| A1 | PLANNING | | |

copyright © Red Box Design Group Ltd 2010